

Regional GLOBE Meeting, 2020

Trainer/ Mentor Trainer certification process

dr.sc. Diana Garašić

Country Coordinator for Croatia

Member of Education Working Group



The reasons for change

The necessary trainer's **competences were not clearly presented** and **required**.

Some trainers and master trainers were listed on GLOBE web site, although not active in GLOBE for many years.

The trainers' & master trainers' list on GLOBE web page is not accurate any more.

There is a need for **new role of mentor trainer** who should serve as trainer and evaluator for trainer candidates.

But, there is no need for **master trainer status** any more – **possible transition** to mentor trainer, or remaining just a trainer.



GLOBE wants to have:

A)

- **high quality teacher trainings** all over the world
- **clear procedures** for trainers' and mentor trainers' first **certification**

B)

- **updated list of trainers** on GLOBE web pages
- **verification of active status** in GLOBE for trainers and mentor trainers now and each 3 years.



T/MT certification procedure & changed roles

Requirements/competences:

- Science knowledge
- Teaching skills (/students)
- Teaching skills (adults)
- Knowledge of GLOBE

Fill out the Active Status Form

GLOBE Trainer

~~Master Trainer~~

There is no master trainers role any more. If active, (if wants to) master trainer could **apply for mentor trainer role or stay just the trainer**

GLOBE Teachers

GLOBE Trainer Candidate

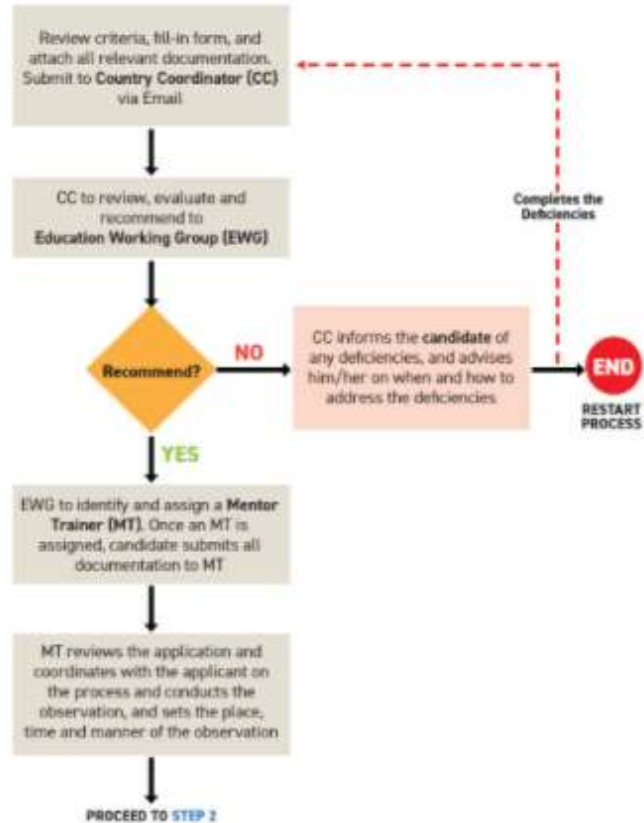
Mentor Trainer

Experienced GLOBE trainer;
Competences in all f 4 fields; Active.
For MT status one should **fill out the Application Form**

Fills out the Application Form, gets mentor who will observe and evaluate candidate's work as trainer.

<https://www.globe.gov/web/trainers/overview>

STEP 1 APPLICATION AND QUALIFICATION REVIEW



THEGLOBEPROGRAM

T/MT Flow Chart. Page 1 of 3.

[Click image to open the full pdf file.](#)

For more information on the certification process, please check the links below:

1. [GLOBE Trainer and Mentor Trainer Qualifications and Certification Process](#)
2. [Candidate Trainer Application](#)
3. [Candidate Trainer Workshop Observation Form](#)
4. [Current Trainer Active Status Form](#)
5. [Candidate Mentor Trainer Application](#)
6. [Candidate Mentor Trainer Workshop Observation Form](#)
7. [Current Mentor Trainer Active Status Form](#)
8. [View List of Trainers on our World Map](#)



THE
GLOBE PROGRAM 

Trainer candidate

CC to review, evaluate and recommend to Education Working Group (EWG)

Recommend?

NO

CC informs the **candidate** of any deficiencies, and advises him/her on when and how to address the deficiencies

Completes the Deficiencies

END

RESTART PROCESS

YES

EWG to identify and assign a **Mentor Trainer (MT)**. Once an MT is assigned, candidate submits all documentation to MT

Mentor submits evaluation to CC/RCO with recommendation

CC/RCO review/submit recommendation to EWG

Recommend?

NO

CC informs the **candidate** and **Mentor Trainer** of any deficiencies, and advises him/her on when and how to address the deficiencies

END

YES

EWG reviews, evaluates, and approves/disapproves the recommendation of the CC/RCO

Approve

NO

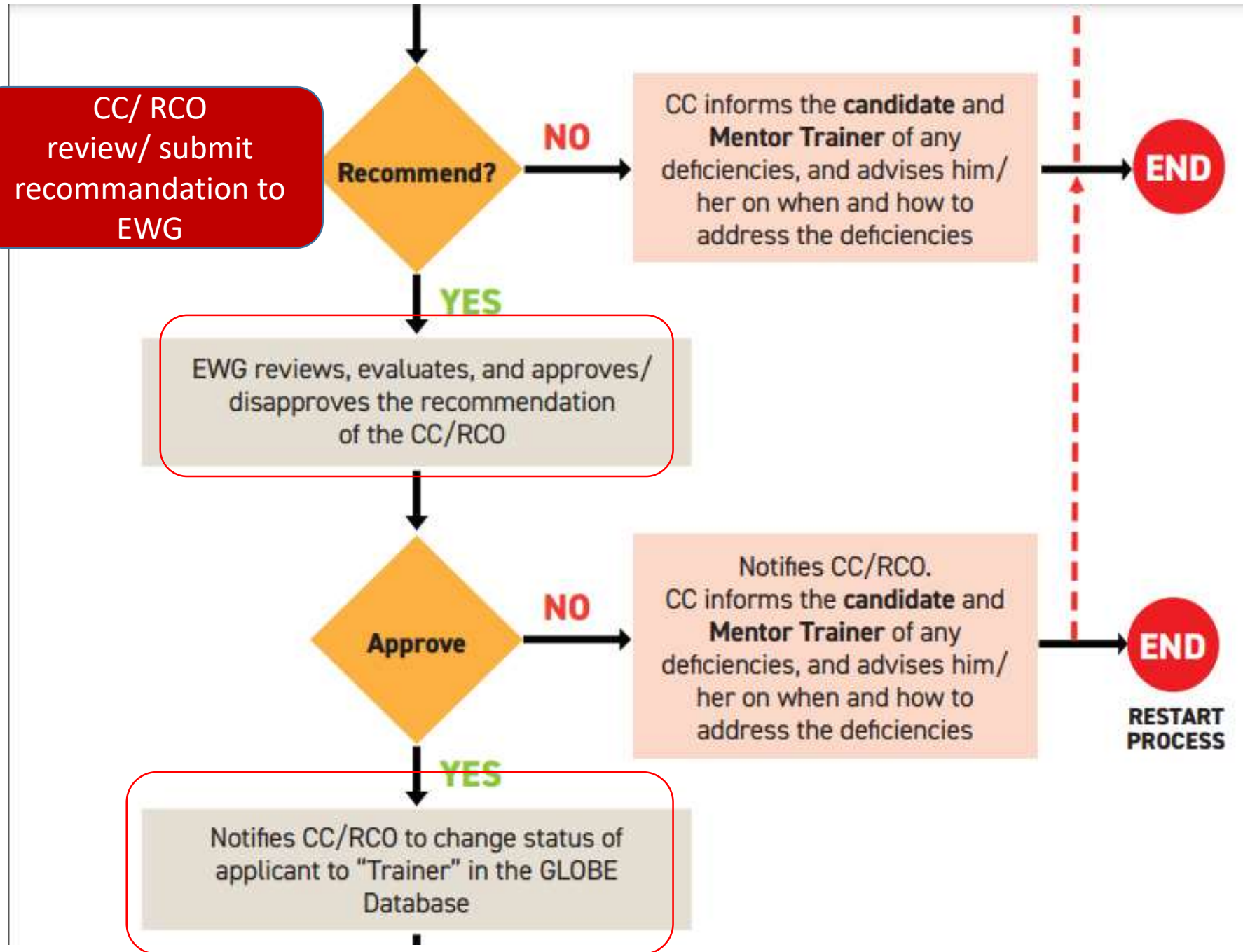
Notifies CC/RCO. CC informs the **candidate** and **Mentor Trainer** of any deficiencies, and advises him/her on when and how to address the deficiencies

END

RESTART PROCESS

YES

Notifies CC/RCO to change status of applicant to "Trainer" in the GLOBE Database



Trainers Maintaining Active Status

GLOBE Office wants updated trainers list by mid November

CCs should contact actual trainers with the request to fill out

Active Status Form;

CC reports to GLOBE Office. Instructions will follow.

Active Status Form should be filled out every 3 years – with attached documentation about GLOBE activities.

Year 2020 is not relevant for the activity status assessment.



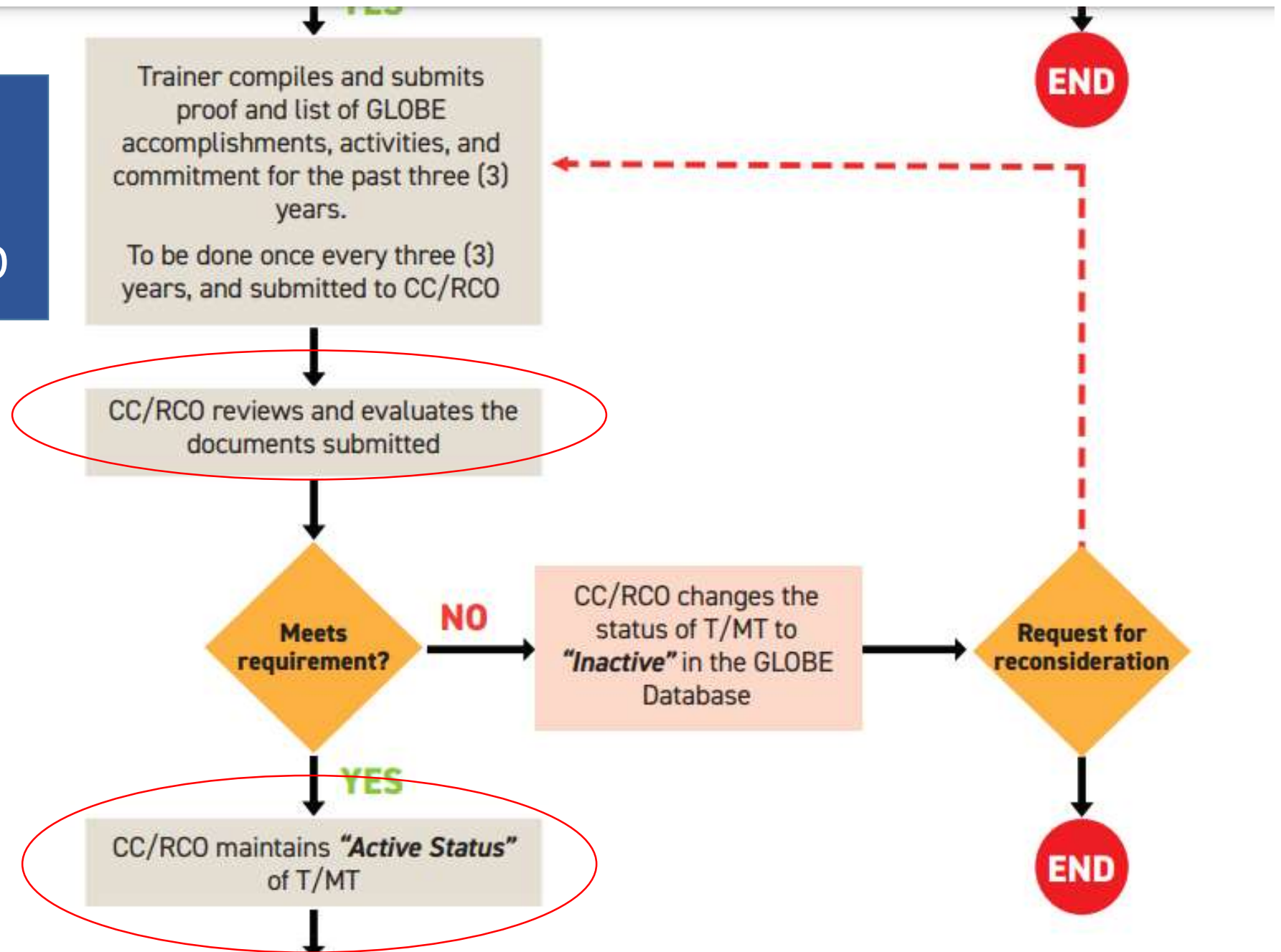
Current Trainer Active Status Form

Trainer Evidence	Describe (list) evidence of being an active <i>GLOBE Trainer</i> (e.g., certificates, screen shots, etc., when pertinent.)
<p>Evidence may include, but is not limited to:</p> <ul style="list-style-type: none">• Workshop History• Data Entry• GLOBE Presentations• Mentoring or Judging IVSS• Other	<p>Events in the country International projects</p>



THE **GLOBE** PROGRAM 

Trainer submits
Activity Status
Form to CC/RCO



Questions?

- You may allways ask:

CC, RCO, EWG

Thank you for your attention!